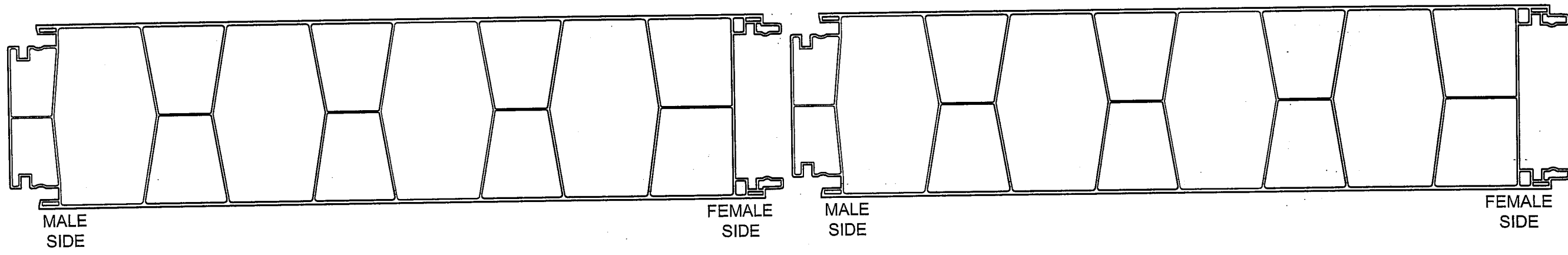


Extrutech FORM Wall System

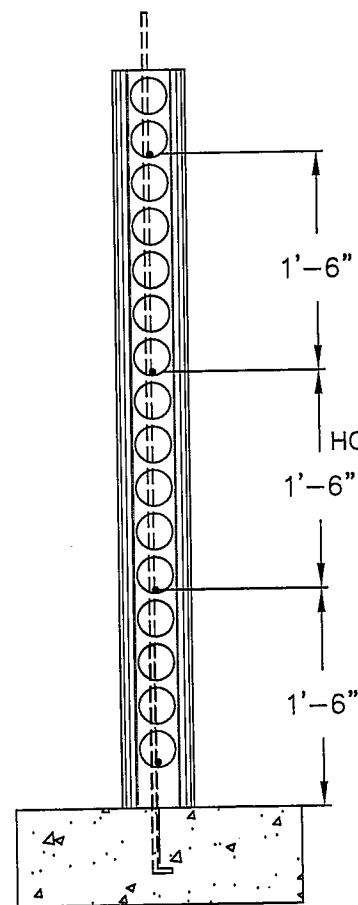
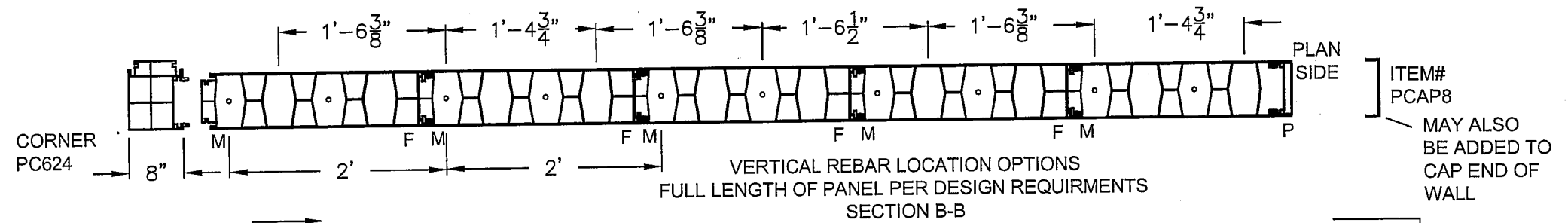
Spline Location

INSERT TWO SPLINES
AT EACH PANEL JOINT
FULL LENGTH OF PANEL
AS REQUIRED

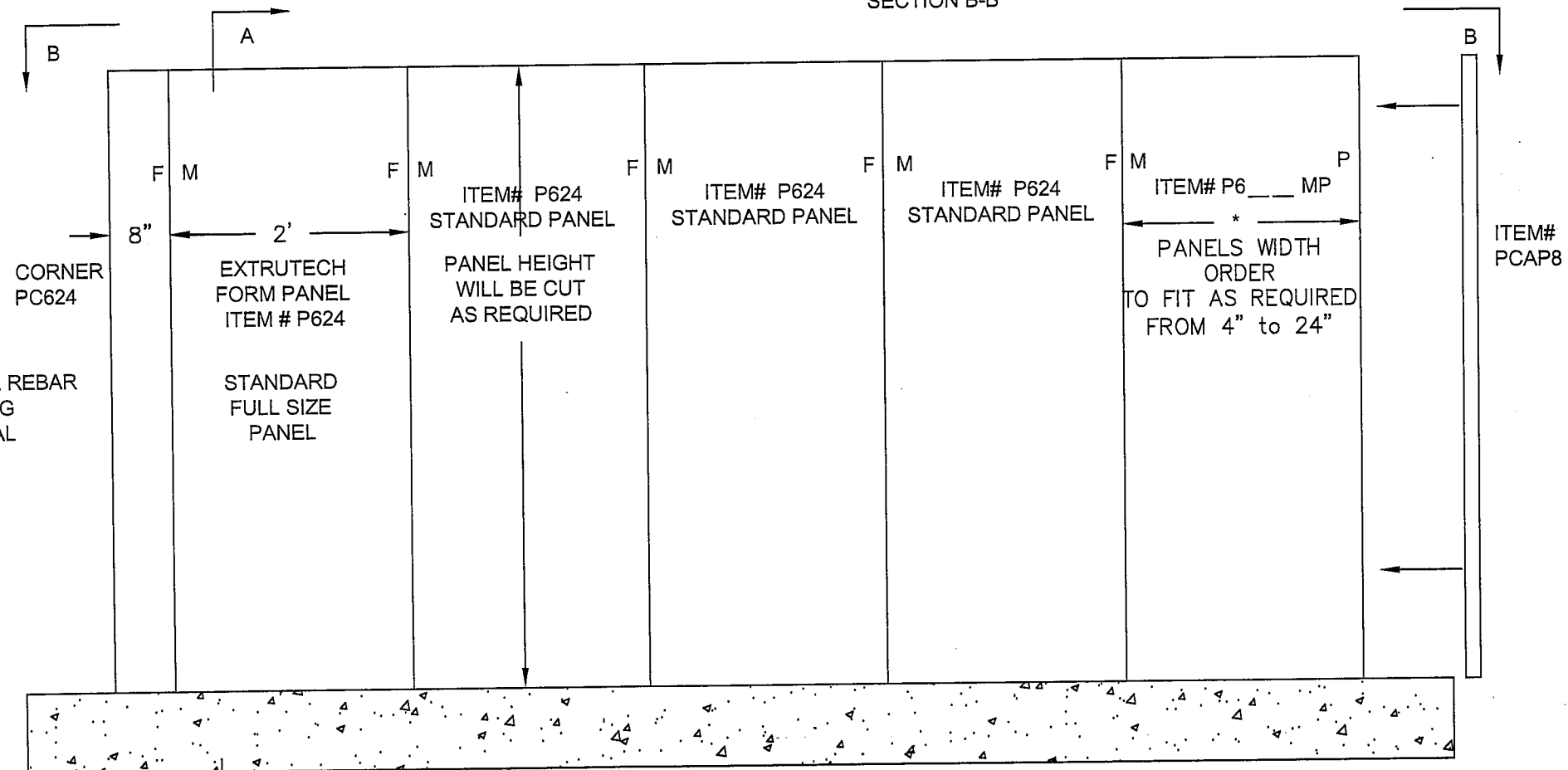


Important Disclaimer:

This transmission is intended only for use by the addressee (s) named herein and may contain information that is proprietary, confidential and/or legally privileged. If you are not the intended recipient, you are hereby notified that any disclosure, copying, distribution, or use of the information contained herein (including any reliance thereon) is STRICTLY PROHIBITED. If you received this transmission in error, please immediately contact the sender and destroy the material in its entirety, whether in electronic or hard copy format. Details and options are subject to change contact Extrutech Plastics, Inc. for latest Product Information. Thank you Phone 888-818-0118

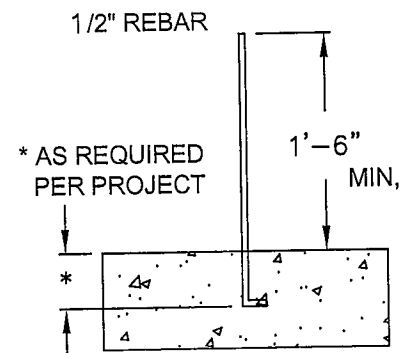


SECTION A-A



EXTRUTECH FORM PANELS

(SIDE VIEW)



REBAR DETAIL

Important Disclaimer:

This transmission is intended only for use by the addressee (s) named herein and may contain information that is proprietary, confidential and/or legally privileged. If you are not the intended recipient, you are hereby notified that any disclosure, copying, distribution, or use of the information contained herein (including any reliance thereon) is STRICTLY PROHIBITED. If you received this transmission in error, please immediately contact the sender and destroy the material in its entirety, whether in electronic or hard copy format. Details and options are subject to change contact Extrutech Plastics, Inc. for latest Product Information. Thank you Phone 888-818-0118

IMPORTANT!

INSTALL BRACING ONE SIDE AT A TIME

1. INSTALL BRACING ON ONE SIDE ONLY
2. INSTALL 8-16 FEET OF FORM PANEL
3. INSTALL OTHER SIDE OF BRACING

METAL STRAPPING
12ga 1"x15" LONG
MAX 3'-4'ft O/CENTER
TYP.

SAFETY GUIDE
WIRE SUPPORT
AT 8' - 12'

FOLLOW ALL SAFETY
REQUIREMENTS WHEN
WORKING AROUND FORMS

CONCRETE RECOMENDATIONS

REBAR - Every 18" (Vertical & Horizontal)
BRACING - Every 8'-12'ft. (2 x 4) or (2x6)
CONCRETE - 6 Slump-W/Plasticizer Added
Pea Size Stone.
4000 PSI - 7 Bag Mix
POUR LIFTS of 3' Ft - 4' Ft. ONLY

FILL FORM IN MULTIPLE PASSES
EACH WITH A MAXIMUM HEIGHT
OF 3 FEET PER PASS

REBAR - Every 18" (Vertical & Horizontal)
BRACING - Every 8'-12'ft. (2 x 4) or (2x6)
CONCRETE - 6 Slump-W/Plastizer Added
Pea Size Stone.
4000 PSI
Pour in Lifts of 3'Ft - 4'Ft. ONLY

BRACE ENDS OF WALLS
AND AT CORNERS
EACH SIDE

2 HORIZONTAL
BRACES CENTERED
ON HEIGHT FOR
PANELS OVER
14'-20'

2 x 6
TYP.

1 HORIZONTAL
BRACE CENTERED
ON HEIGHT FOR
PANELS OVER
14'-20'

REBAR
18" on center

1'-6"

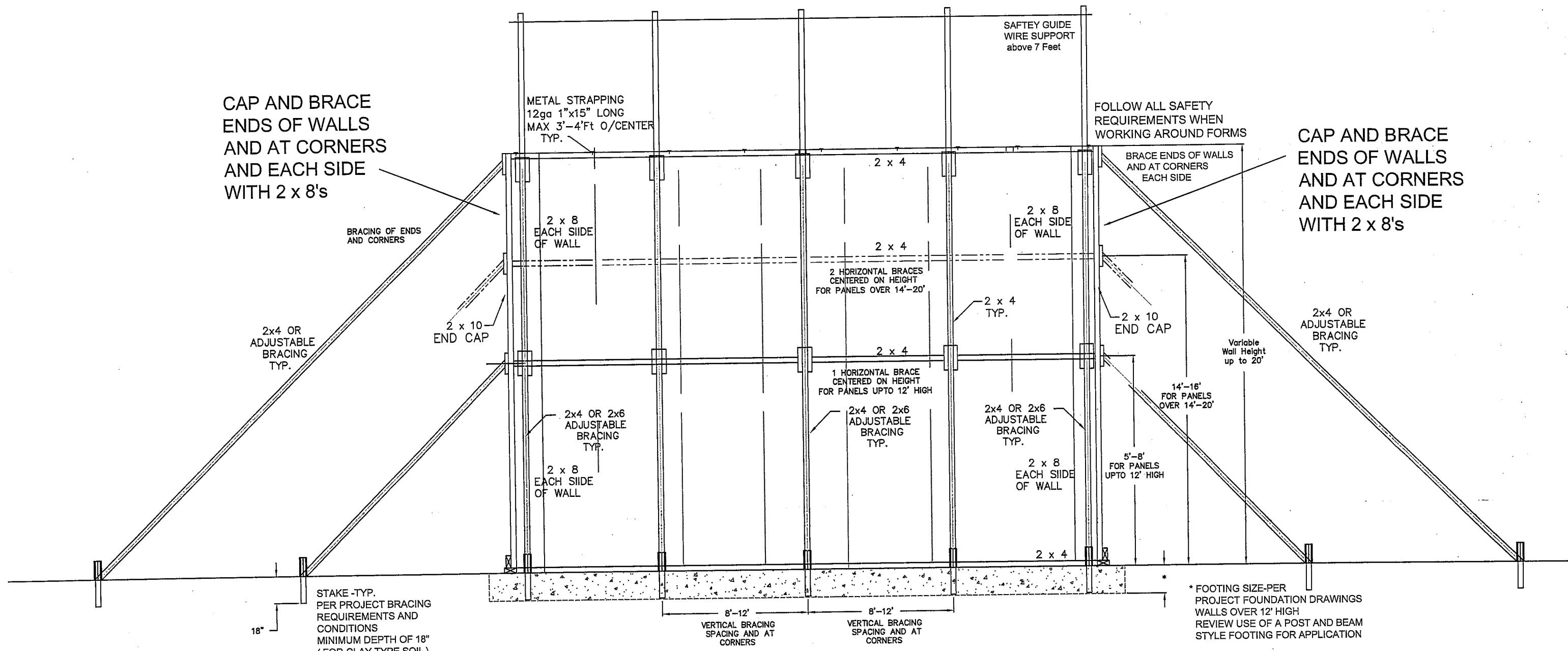
ADJUSTABLE
BRACING
2x4 TYP.
8'- 12' ON CENTER

VARIABLE
WALL HEIGHT
2'-20' HIGH

STAKE -TYP.
PER PROJECT BRACING
REQUIREMENTS AND
CONDITIONS
MINIMUM DEPTH OF 18"

* FOOTING SIZE-PER PROJECT
FOUNDATION DRAWINGS
WALLS OVER 12' HIGH
REVIEW USE OF A POST AND BEAM
STYLE FOOTING FOR APPLICATION

EXTRUTECH-FORM Ladder Bracing Option - By Builder End View



CAP AND BRACE
ENDS OF WALLS
AND AT CORNERS
AND EACH SIDE
WITH 2 x 8's

CAP AND BRACE
ENDS OF WALLS
AND AT CORNERS
AND EACH SIDE
WITH 2 x 8's

STAKE -TYP.
PER PROJECT BRACING
REQUIREMENTS AND
CONDITIONS
MINIMUM DEPTH OF 18"
(FOR CLAY TYPE SOIL)

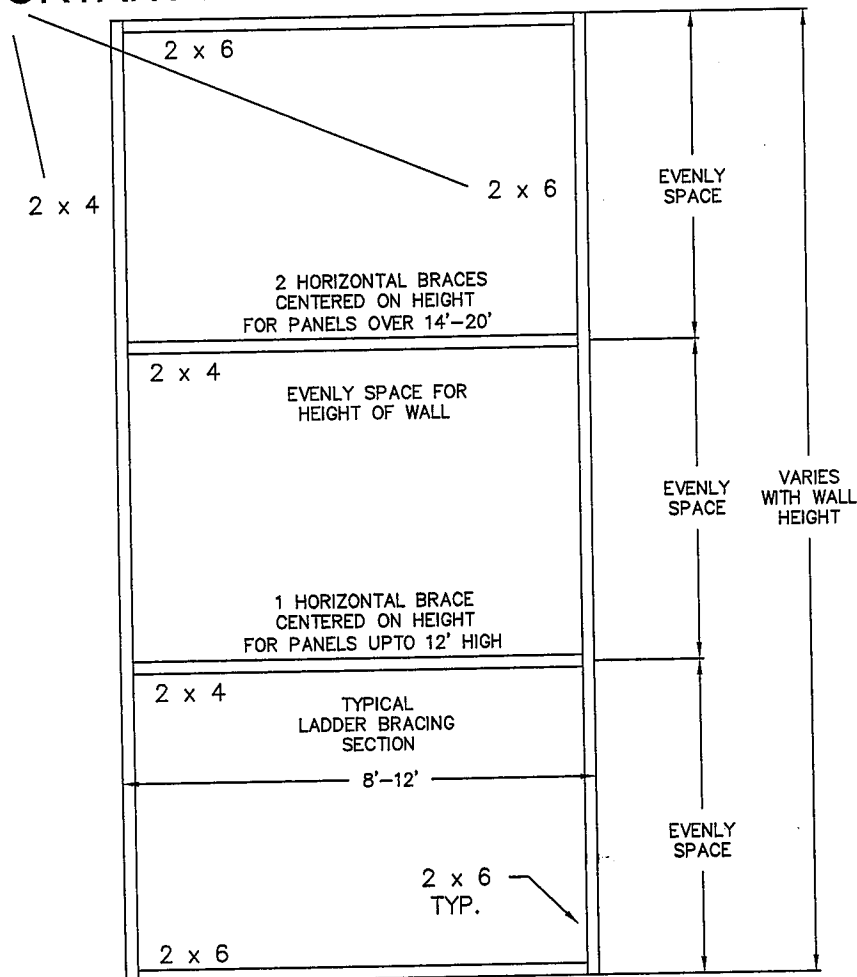
EXTRUTECH-FORM
VERTICAL BRACING OPTION
By Builder

NOTE: WALLS UPTO 12' FT. HIGH ONLY NEED BRACING
FROM TOP OF WALL TO GROUND. - NO HORIZONTAL BRACING
PLACE VERTICAL BRACING EVERY 8' TO 12' APART AND ON
THREE SIDES AT END OF WALLS AND AT CORNERS

* FOOTING SIZE-PER
PROJECT FOUNDATION DRAWINGS
WALLS OVER 12' HIGH
REVIEW USE OF A POST AND BEAM
STYLE FOOTING FOR APPLICATION

Important Disclaimer:
This transmission is intended only for use by the addressee (s) named herein and may contain information that is proprietary, confidential and/or legally privileged. If you are not the intended recipient, you are hereby notified that any disclosure, copying, distribution, or use of the information contained herein (including any reliance thereon) is STRICTLY PROHIBITED. If you received this transmission in error, please immediately contact the sender and destroy the material in its entirety, whether in electronic or hard copy format. Details and options are subject to change contact Extrutech Plastics, Inc. for latest Product Information. Thank you

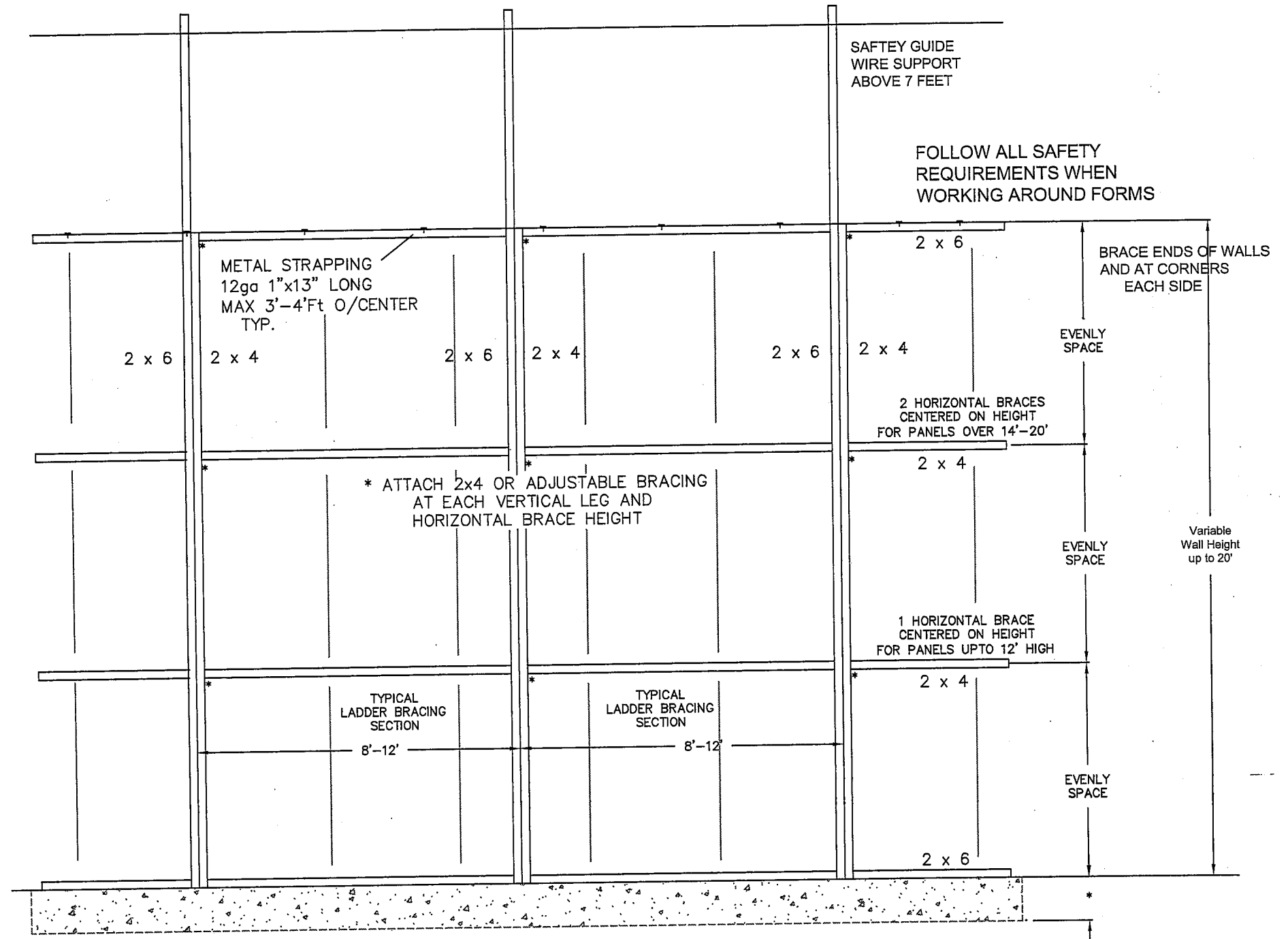
IMPORTANT !



LADDER STYLE BRACING

IMPORTANT !

- 2x6 LADDER STYLE BRACING
1. Stand up bracing and Anchor to Footing, on Chalk Line.
 2. Plum Ladder bracing and brace.
 3. Stand FORM PANELS against ladder bracing section.
 4. Build 2nd section and put against FORM Panel on opposite side after FORM's are up.
 5. Attach each section to mating section and with steel straps at top of wall.

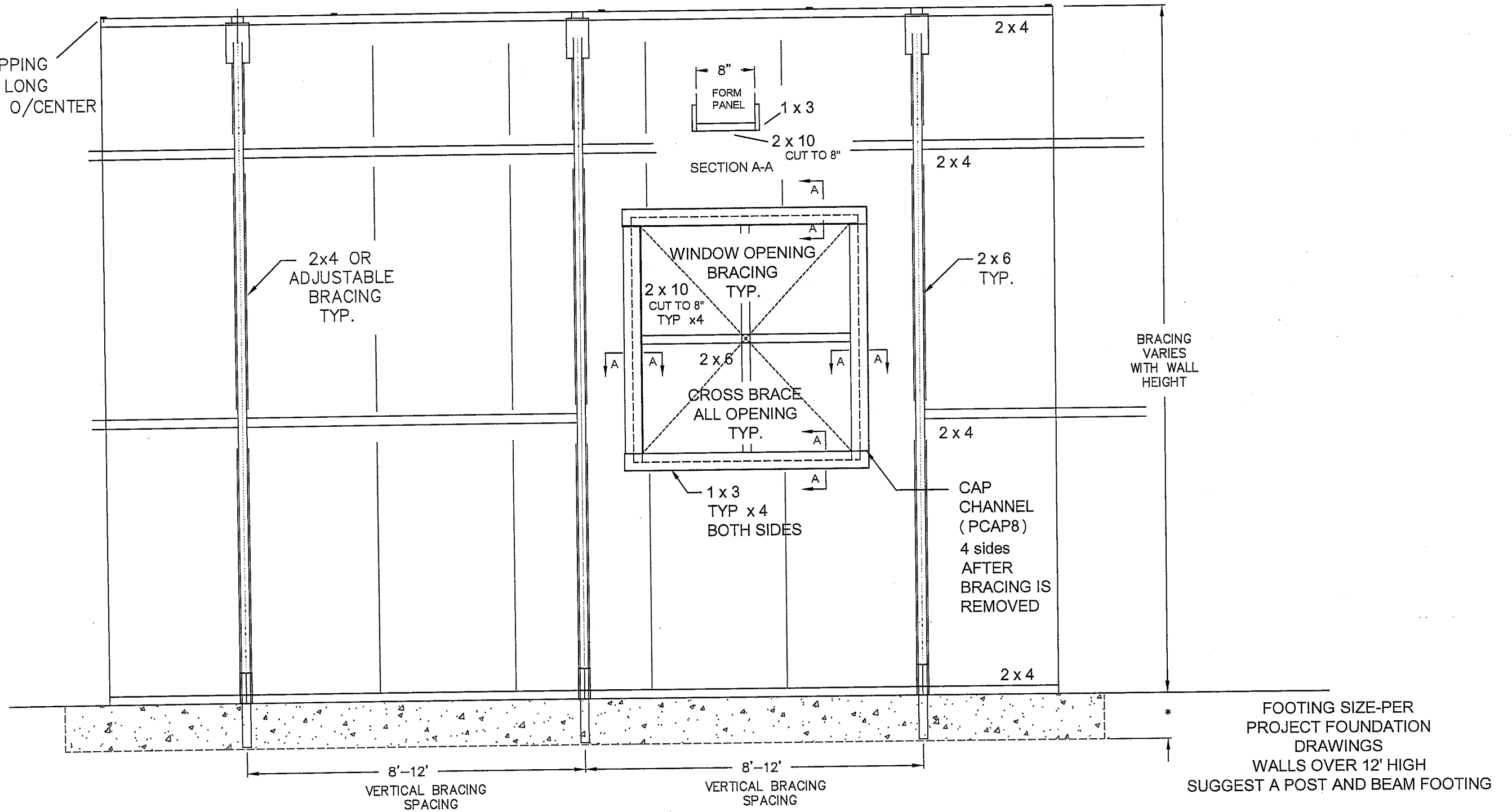


**EXTRUTECH-FORM
LADDER BRACING OPTION
By Builder**

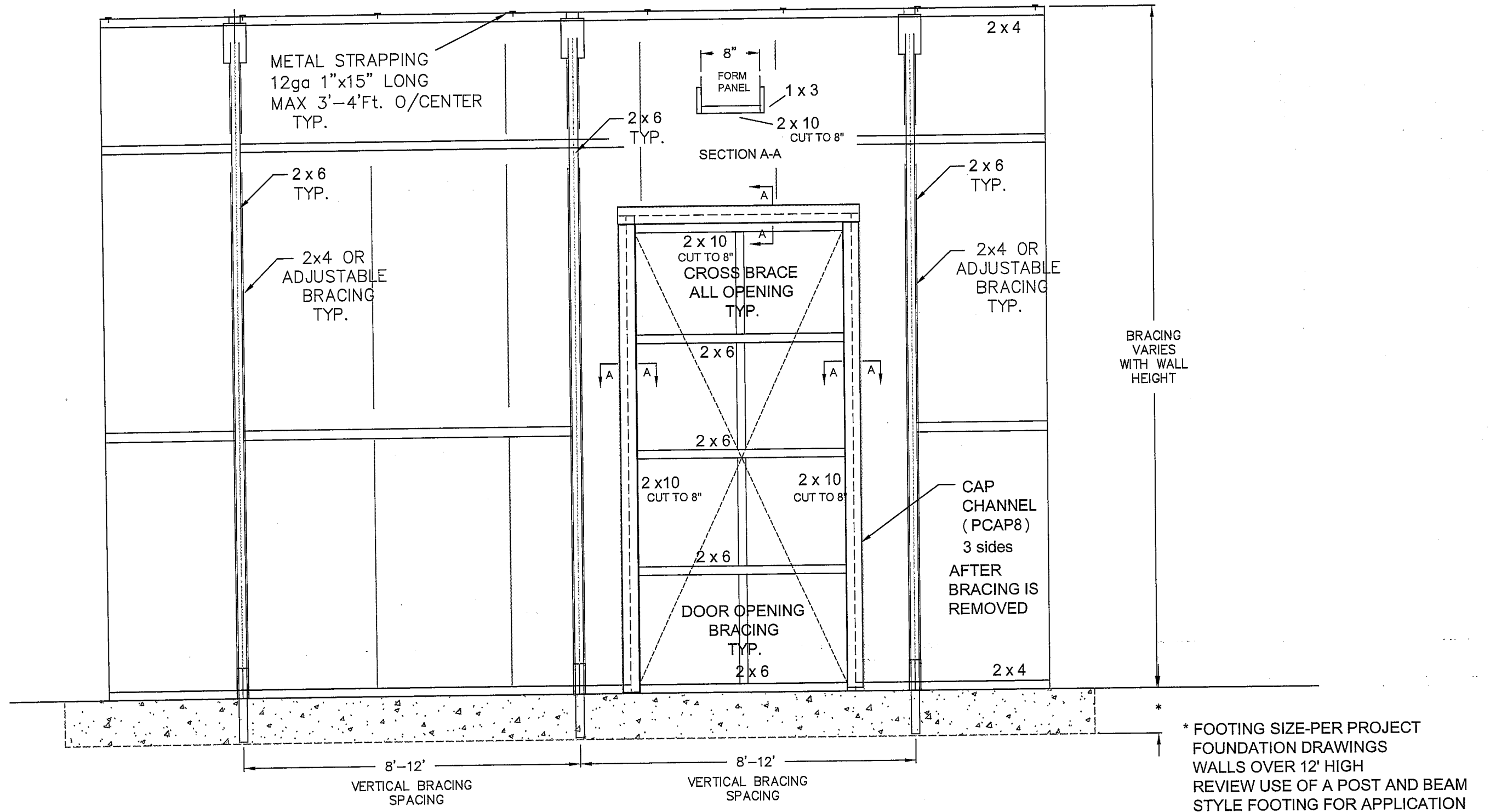
* FOOTING SIZE-PER PROJECT
FOUNDATION DRAWINGS
FOR WALLS OVER 12' HIGH
REVIEW USE OF A POST AND BEAM
STYLE FOOTING FOR APPLICATION

Important Disclaimer:
This transmission is intended only for use by the addressee (s) named herein and may contain information that is proprietary, confidential and/or legally privileged. If you are not the intended recipient, you are hereby notified that any disclosure, copying, distribution, or use of the information contained herein (including any reliance thereon) is STRICTLY PROHIBITED. If you received this transmission in error, please immediately contact the sender and destroy the material in its entirety, whether in electronic or hard copy format. Details and options are subject to change contact Extrutech Plastics, Inc. for latest Product Information.
Thank you

METAL STRAPPING
12ga 1"x15" LONG
MAX 3'-4' O/CENTER
TYP.



Important Disclaimer:
This transmission is intended only for use by the addressee (s) named herein and may contain information that is proprietary, confidential and/or legally privileged. If you are not the intended recipient, you are hereby notified that any disclosure, copying, distribution, or use of the information contained herein (including any reliance thereon) is STRICTLY PROHIBITED. If you received this transmission in error, please immediately contact the sender and destroy the material in its entirety, whether in electronic or hard copy format. Details and options are subject to change contact Extrutech Plastics, Inc. for latest Product Information.
Thank you



Important Disclaimer:
 This transmission is intended only for use by the addressee (s) named herein and may contain information that is proprietary, confidential and/or legally privileged. If you are not the intended recipient, you are hereby notified that any disclosure, copying, distribution, or use of the information contained herein (including any reliance thereon) is STRICTLY PROHIBITED. If you received this transmission in error, please immediately contact the sender and destroy the material in its entirety, whether in electronic or hard copy format. Details and options are subject to change contact Extrutech Plastics, Inc. for latest Product Information.
 Thank you

EXTRUTECH-FORM Door Opening Bracing By Builder